

標準庫存螺桿

一、標準庫存軋製螺桿

一般傳動用軋製滾珠螺桿 (JIS C7級精度)

R8系列		R10系列									
<p>1</p> <p>R8-2T4-FSI-800-0.05</p> <table border="1"> <tr> <td>動負荷 C(Kgf)</td> <td>185</td> </tr> <tr> <td>靜負荷 Co(Kgf)</td> <td>297</td> </tr> </table>	動負荷 C(Kgf)	185	靜負荷 Co(Kgf)	297		<p>2</p> <p>R10-4B1-FSW-1500-0.05</p> <table border="1"> <tr> <td>動負荷 C(Kgf)</td> <td>304</td> </tr> <tr> <td>靜負荷 Co(Kgf)</td> <td>466</td> </tr> </table>	動負荷 C(Kgf)	304	靜負荷 Co(Kgf)	466	
動負荷 C(Kgf)	185										
靜負荷 Co(Kgf)	297										
動負荷 C(Kgf)	304										
靜負荷 Co(Kgf)	466										
R12系列											
<p>3</p> <p>R12-4B1-FSW-1500-0.05</p> <table border="1"> <tr> <td>動負荷 C(Kgf)</td> <td>344</td> </tr> <tr> <td>靜負荷 Co(Kgf)</td> <td>574</td> </tr> </table>	動負荷 C(Kgf)	344	靜負荷 Co(Kgf)	574		<p>4</p> <p>R12-4T3-FSI-1500-0.05</p> <table border="1"> <tr> <td>動負荷 C(Kgf)</td> <td>337</td> </tr> <tr> <td>靜負荷 Co(Kgf)</td> <td>559</td> </tr> </table>	動負荷 C(Kgf)	337	靜負荷 Co(Kgf)	559	
動負荷 C(Kgf)	344										
靜負荷 Co(Kgf)	574										
動負荷 C(Kgf)	337										
靜負荷 Co(Kgf)	559										
<p>5</p> <p>R12-5K4-FSC-1500-0.05</p> <table border="1"> <tr> <td>動負荷 C(Kgf)</td> <td>560</td> </tr> <tr> <td>靜負荷 Co(Kgf)</td> <td>1220</td> </tr> </table>	動負荷 C(Kgf)	560	靜負荷 Co(Kgf)	1220		<p>6</p> <p>2R12-10A1-FST-1500-0.05</p> <table border="1"> <tr> <td>動負荷 C(Kgf)</td> <td>320</td> </tr> <tr> <td>靜負荷 Co(Kgf)</td> <td>590</td> </tr> </table>	動負荷 C(Kgf)	320	靜負荷 Co(Kgf)	590	
動負荷 C(Kgf)	560										
靜負荷 Co(Kgf)	1220										
動負荷 C(Kgf)	320										
靜負荷 Co(Kgf)	590										

*此圖紙不可作為定貨依據，圖紙變更恕不另行通知。

7

Technical drawing of a gear pump (model 2R12-10K3-FSC-1500-0.05). The front view shows a circular housing with 6 mounting holes (6- $\phi 4.5$ 鑽穿 BCD 32) and a 22.5° angle. The side view shows a shaft with dimensions 10, 12, and 43, and diameters $\phi 40$, $\phi 24 \pm 0.007$, and $\phi 24 \pm 0.05$. The caption lists a dynamic load of 520 Kg and a static load of 1030 Kg.

動負荷 C(Kgf)	520
靜負荷 Co(Kgf)	1030

R15系列

8

Technical drawing of a gear pump (model R15-5K4-FSC-3000-0.05). The front view shows a circular housing with 6 mounting holes (6- $\phi 5.5$ 鑽穿 BCD 38) and a 22.5° angle. The side view shows a shaft with dimensions 10, 10, and 38, and diameters $\phi 48$, $\phi 28 \pm 0.007$, and $\phi 28 \pm 0.05$. The caption lists a dynamic load of 1030 Kg and a static load of 2140 Kg.

動負荷 C(Kgf)	1030
靜負荷 Co(Kgf)	2140

9

Technical drawing of a gear pump (model 2R15-10B1-FST-3000-0.05). The front view shows a circular housing with 4 mounting holes (4- $\phi 5.5$ 鑽穿 BCD 45) and a 30° angle. The side view shows a shaft with dimensions 10, 10, and 52, and diameters $\phi 57$ and $\phi 34 \pm 0.009$. The caption lists a dynamic load of 810 Kg and a static load of 1620 Kg.

動負荷 C(Kgf)	810
靜負荷 Co(Kgf)	1620

10

Technical drawing of a gear pump (model 2R15-10K3-FSC-3000-0.05). The front view shows a circular housing with 4 mounting holes (4- $\phi 5.5$ THRU, $\phi 9.5 \times 5.5$ DP BCD 45) and a 30° angle. The side view shows a shaft with dimensions 11, 10, and 44, and diameters $\phi 57$ and $\phi 34 \pm 0.009$. The caption lists a dynamic load of 860 Kg and a static load of 1746 Kg.

動負荷 C(Kgf)	860
靜負荷 Co(Kgf)	1746

11

Technical drawing of a gear pump (model 2R15-10K3-FSC-3000-0.05). The front view shows a circular housing with 6 mounting holes (6- $\phi 5.5$ THRU BCD 38) and a 22.5° angle. The side view shows a shaft with dimensions 10, 10, and 45, and diameters $\phi 48$, $\phi 28 \pm 0.007$, and $\phi 28 \pm 0.05$. The caption lists a dynamic load of 810 Kg and a static load of 1670 Kg.

動負荷 C(Kgf)	810
靜負荷 Co(Kgf)	1670

12

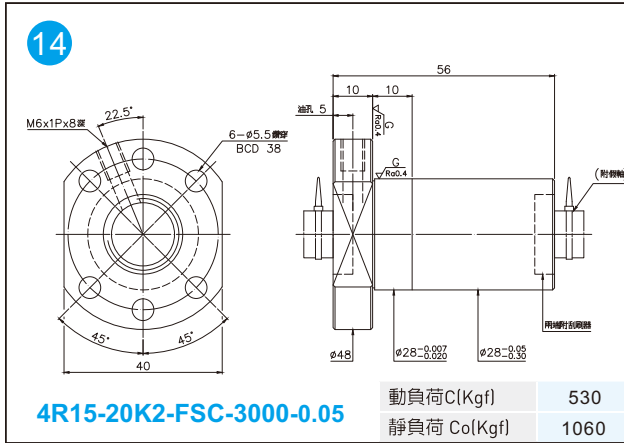
Technical drawing of a gear pump (model 4R15-16K3-FSC-3000-0.05). The front view shows a circular housing with 6 mounting holes (6- $\phi 5.5$ THRU BCD 38) and a 22.5° angle. The side view shows a shaft with dimensions 10, 10, and 65, and diameters $\phi 48$, $\phi 28 \pm 0.007$, and $\phi 28 \pm 0.05$. The caption lists a dynamic load of 810 Kg and a static load of 1730 Kg.

動負荷 C(Kgf)	810
靜負荷 Co(Kgf)	1730

13

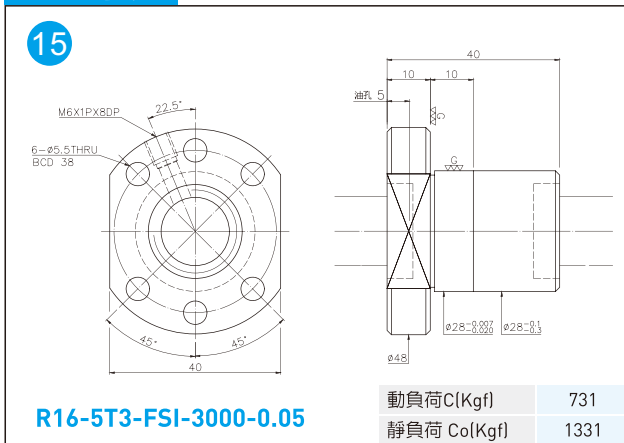
Technical drawing of a gear pump (model 4R15-20A2-DFSW-3000-0.05). The front view shows a circular housing with 4 mounting holes (4- $\phi 5.5$ 鑽穿 BCD 45) and a 30° angle. The side view shows a shaft with dimensions 10, 10, and 59, and diameters $\phi 57$ and $\phi 34 \pm 0.009$. The caption lists a dynamic load of 691 Kg and a static load of 1312 Kg.

動負荷 C(Kgf)	691
靜負荷 Co(Kgf)	1312

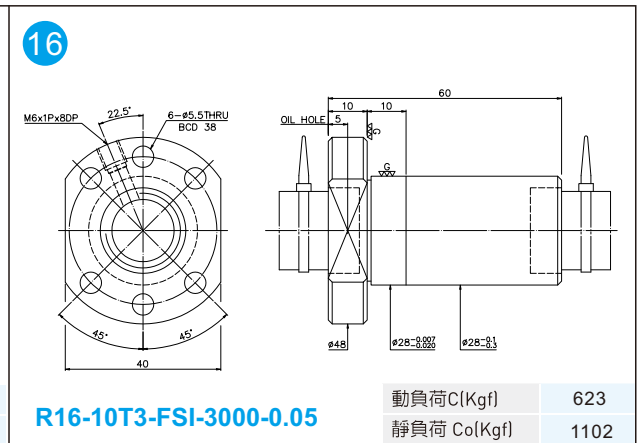


4R15-20K2-FSC-3000-0.05

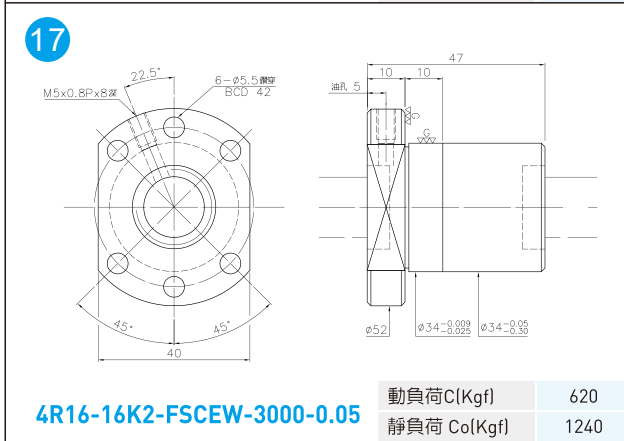
R16系列



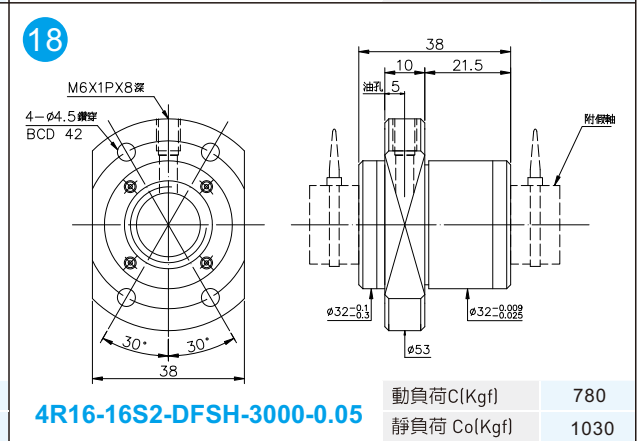
R16-5T3-FSI-3000-0.05



R16-10T3-FSI-3000-0.05

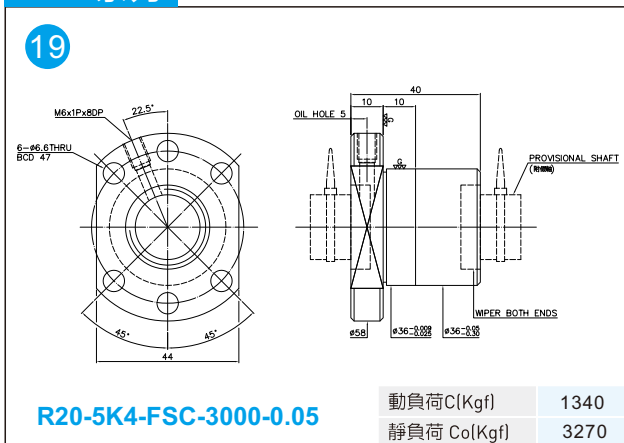


4R16-16K2-FSCW-3000-0.05

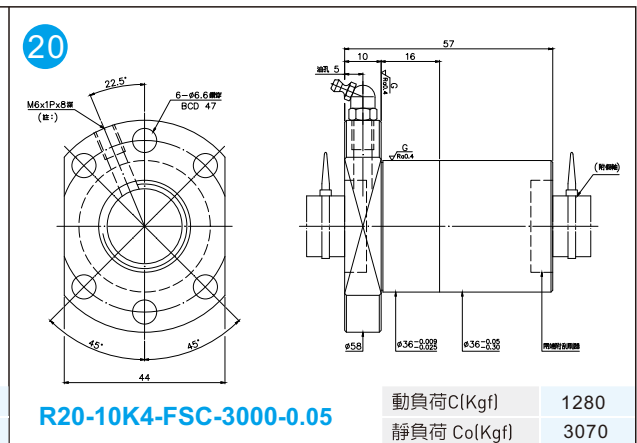


4R16-16S2-DFSH-3000-0.05

R20系列



R20-5K4-FSC-3000-0.05



R20-10K4-FSC-3000-0.05

*此圖紙不可作為定貨依據，圖紙變更恕不另行通知。

R20系列

<p>21</p> <p>R20-5T3-FSI-3000-0.05</p> <table border="1"> <tr> <td>動負荷 C(Kgf)</td> <td>733</td> </tr> <tr> <td>靜負荷 Co(Kgf)</td> <td>1495</td> </tr> </table>	動負荷 C(Kgf)	733	靜負荷 Co(Kgf)	1495	<p>22</p> <p>R20-5T4-FSI-3000-0.05</p> <table border="1"> <tr> <td>動負荷 C(Kgf)</td> <td>1300</td> </tr> <tr> <td>靜負荷 Co(Kgf)</td> <td>3100</td> </tr> </table>	動負荷 C(Kgf)	1300	靜負荷 Co(Kgf)	3100
動負荷 C(Kgf)	733								
靜負荷 Co(Kgf)	1495								
動負荷 C(Kgf)	1300								
靜負荷 Co(Kgf)	3100								
<p>23</p> <p>R20-10B1-FST-3000-0.05</p> <table border="1"> <tr> <td>動負荷 C(Kgf)</td> <td>1560</td> </tr> <tr> <td>靜負荷 Co(Kgf)</td> <td>3150</td> </tr> </table>	動負荷 C(Kgf)	1560	靜負荷 Co(Kgf)	3150	<p>24</p> <p>R20-10K3-FSC-3000-0.05</p> <table border="1"> <tr> <td>動負荷 C(Kgf)</td> <td>990</td> </tr> <tr> <td>靜負荷 Co(Kgf)</td> <td>2260</td> </tr> </table>	動負荷 C(Kgf)	990	靜負荷 Co(Kgf)	2260
動負荷 C(Kgf)	1560								
靜負荷 Co(Kgf)	3150								
動負荷 C(Kgf)	990								
靜負荷 Co(Kgf)	2260								
<p>25</p> <p>4R20-20K2-FSC-3000-0.05</p> <table border="1"> <tr> <td>動負荷 C(Kgf)</td> <td>690</td> </tr> <tr> <td>靜負荷 Co(Kgf)</td> <td>1560</td> </tr> </table>	動負荷 C(Kgf)	690	靜負荷 Co(Kgf)	1560	<p>26</p> <p>4R20-20K3-FSC-3000-0.05</p> <table border="1"> <tr> <td>動負荷 C(Kgf)</td> <td>1010</td> </tr> <tr> <td>靜負荷 Co(Kgf)</td> <td>2420</td> </tr> </table>	動負荷 C(Kgf)	1010	靜負荷 Co(Kgf)	2420
動負荷 C(Kgf)	690								
靜負荷 Co(Kgf)	1560								
動負荷 C(Kgf)	1010								
靜負荷 Co(Kgf)	2420								
<p>27</p> <p>4R20-20K4-DFSC-3000-0.05</p> <table border="1"> <tr> <td>動負荷 C(Kgf)</td> <td>1250</td> </tr> <tr> <td>靜負荷 Co(Kgf)</td> <td>3110</td> </tr> </table>	動負荷 C(Kgf)	1250	靜負荷 Co(Kgf)	3110	<p>28</p> <p>4R20-20S2-DFSH-3000-0.05</p> <table border="1"> <tr> <td>動負荷 C(Kgf)</td> <td>733</td> </tr> <tr> <td>靜負荷 Co(Kgf)</td> <td>1495</td> </tr> </table>	動負荷 C(Kgf)	733	靜負荷 Co(Kgf)	1495
動負荷 C(Kgf)	1250								
靜負荷 Co(Kgf)	3110								
動負荷 C(Kgf)	733								
靜負荷 Co(Kgf)	1495								

*此圖紙不可作為定貨依據，圖紙變更恕不另行通知。

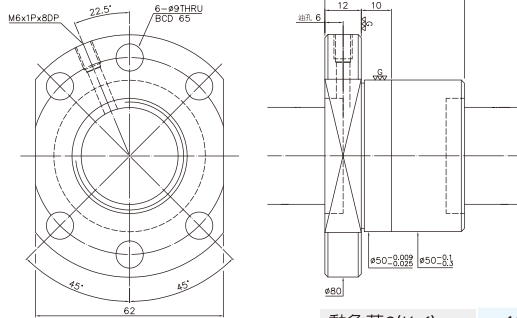
R25系列

<p>29</p> <p>R25-5K4-FSC-4500-0.05</p> <table border="1"> <tr> <td>動負荷 C(Kgf)</td> <td>1490</td> </tr> <tr> <td>靜負荷 Co(Kgf)</td> <td>4150</td> </tr> </table>	動負荷 C(Kgf)	1490	靜負荷 Co(Kgf)	4150	<p>30</p> <p>R25-5T3-FSI-4500-0.05</p> <table border="1"> <tr> <td>動負荷 C(Kgf)</td> <td>879</td> </tr> <tr> <td>靜負荷 Co(Kgf)</td> <td>2082</td> </tr> </table>	動負荷 C(Kgf)	879	靜負荷 Co(Kgf)	2082
動負荷 C(Kgf)	1490								
靜負荷 Co(Kgf)	4150								
動負荷 C(Kgf)	879								
靜負荷 Co(Kgf)	2082								
<p>31</p> <p>R25-5T4-FSI-4500-0.05</p> <table border="1"> <tr> <td>動負荷 C(Kgf)</td> <td>1500</td> </tr> <tr> <td>靜負荷 Co(Kgf)</td> <td>4000</td> </tr> </table>	動負荷 C(Kgf)	1500	靜負荷 Co(Kgf)	4000	<p>32</p> <p>R25-10K4-FSC-4500-0.05</p> <table border="1"> <tr> <td>動負荷 C(Kgf)</td> <td>1480</td> </tr> <tr> <td>靜負荷 Co(Kgf)</td> <td>4120</td> </tr> </table>	動負荷 C(Kgf)	1480	靜負荷 Co(Kgf)	4120
動負荷 C(Kgf)	1500								
靜負荷 Co(Kgf)	4000								
動負荷 C(Kgf)	1480								
靜負荷 Co(Kgf)	4120								
<p>33</p> <p>R25-10T3-FSI-4500-0.05</p> <table border="1"> <tr> <td>動負荷 C(Kgf)</td> <td>1900</td> </tr> <tr> <td>靜負荷 Co(Kgf)</td> <td>4200</td> </tr> </table>	動負荷 C(Kgf)	1900	靜負荷 Co(Kgf)	4200	<p>34</p> <p>4R25-25K4-DFSC-4500-0.05</p> <table border="1"> <tr> <td>動負荷 C(Kgf)</td> <td>1380</td> </tr> <tr> <td>靜負荷 Co(Kgf)</td> <td>3900</td> </tr> </table>	動負荷 C(Kgf)	1380	靜負荷 Co(Kgf)	3900
動負荷 C(Kgf)	1900								
靜負荷 Co(Kgf)	4200								
動負荷 C(Kgf)	1380								
靜負荷 Co(Kgf)	3900								
<p>35</p> <p>4R25-25S2-DFSH-4500-0.05</p> <table border="1"> <tr> <td>動負荷 C(Kgf)</td> <td>1208</td> </tr> <tr> <td>靜負荷 Co(Kgf)</td> <td>2799</td> </tr> </table>	動負荷 C(Kgf)	1208	靜負荷 Co(Kgf)	2799					
動負荷 C(Kgf)	1208								
靜負荷 Co(Kgf)	2799								

*此圖紙不可作為定貨依據，圖紙變更恕不另行通知。

R32系列

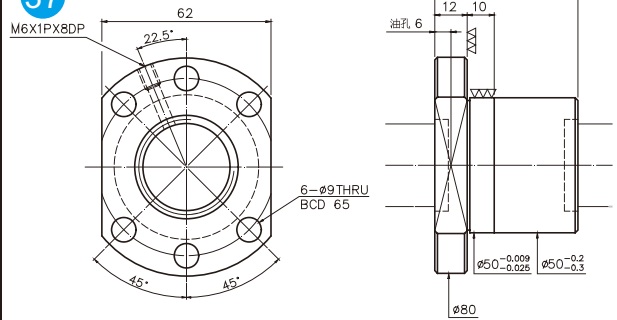
36



R32-5T3-FSI-4500-0.05

動負荷 C(Kgf)	1008
靜負荷 Co(Kgf)	2772

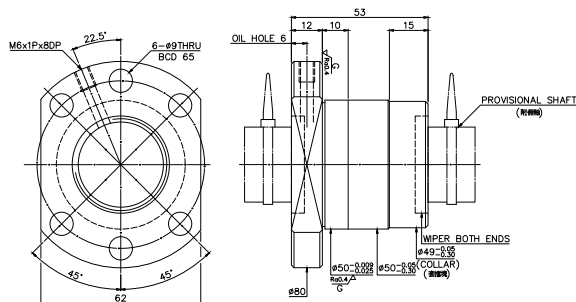
37



R32-5T4-FSI-4500-0.05

動負荷 C(Kgf)	1700
靜負荷 Co(Kgf)	5300

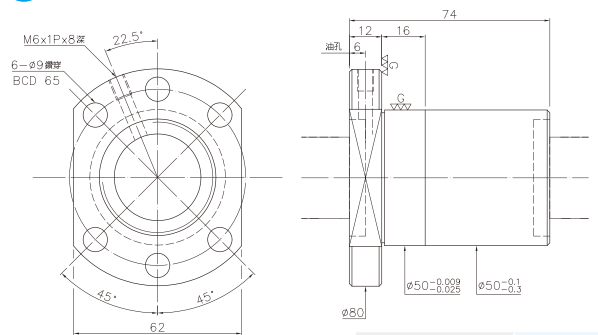
38



R32-5K4-FSC-4500-0.05

動負荷 C(Kgf)	1660
靜負荷 Co(Kgf)	5370

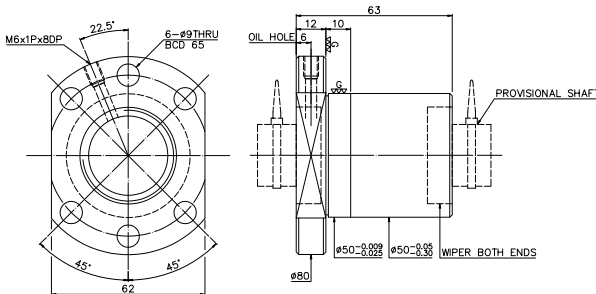
39



R32-10T3-FSI-4500-0.05

動負荷 C(Kgf)	2264
靜負荷 Co(Kgf)	4803

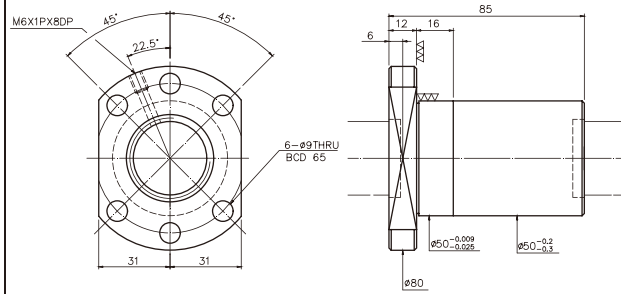
40



R32-10K4-FSC-4500-0.05

動負荷 C(Kgf)	2210
靜負荷 Co(Kgf)	6470

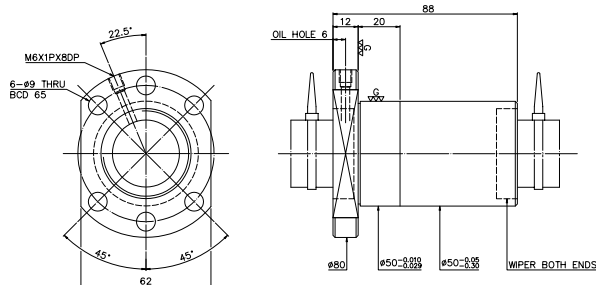
41



R32-10T4-FSI-4500-0.05

動負荷 C(Kgf)	3900
靜負荷 Co(Kgf)	9100

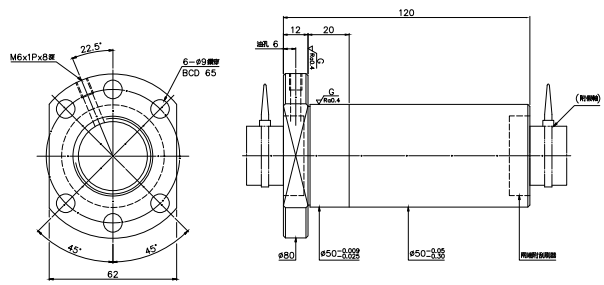
42



2R32-20K3-FSC-4500-0.05

動負荷 C(Kgf)	1710
靜負荷 Co(Kgf)	4890

43



4R32-32K3-FSC-4500-0.05

動負荷 C(Kgf)	1690
靜負荷 Co(Kgf)	4940

44

Technical drawing of a gear pump (model 4R32-32S2-DFSH-4500-0.05). The front view shows a circular housing with 4- $\phi 9$ THRU holes (BCD 74) and a central shaft with an M6x1Px8 screw. The side view shows a shaft diameter of $\phi 92$ and a total length of 85. The gear meshing area has a diameter of $\phi 58 \pm 0.010$. The housing has a diameter of 68 and a 30-degree chamfer.

4R32-32S2-DFSH-4500-0.05	動負荷 C(Kgf)	1715
	靜負荷 Co(Kgf)	4264

R40系列

45

Technical drawing of a gear pump (model R40-5T4-FSI-5600-0.05). The front view shows a circular housing with 8- $\phi 9$ THRU holes (BCD 78) and a central shaft with an M8x1Px10DP screw. The side view shows a shaft diameter of $\phi 9.3$ and a total length of 53. The gear meshing area has a diameter of $\phi 6.3 \pm 0.010$. The housing has a diameter of 70 and chamfers of 30, 15, and 15 degrees.

R40-5T4-FSI-5600-0.05	動負荷 C(Kgf)	1900
	靜負荷 Co(Kgf)	6800

46

Technical drawing of a gear pump (model R40-10T3-FSI-5600-0.05). The front view shows a circular housing with 8- $\phi 9$ THRU holes (BCD 78) and a central shaft with an M8x1Px10 screw. The side view shows a shaft diameter of $\phi 9.3$ and a total length of 74. The gear meshing area has a diameter of $\phi 6.3 \pm 0.010$. The housing has a diameter of 70 and chamfers of 45, 15, and 15 degrees.

R40-10T3-FSI-5600-0.05	動負荷 C(Kgf)	2651
	靜負荷 Co(Kgf)	6366

47

Technical drawing of a gear pump (model R40-10T4-FSI-5600-0.05). The front view shows a circular housing with 8- $\phi 9$ THRU holes (BCD 78) and a central shaft with an M8x1Px10 screw. The side view shows a shaft diameter of $\phi 9.3$ and a total length of 87. The gear meshing area has a diameter of $\phi 6.3 \pm 0.010$. The housing has a diameter of 70 and chamfers of 45, 15, and 15 degrees.

R40-10T4-FSI-5600-0.05	動負荷 C(Kgf)	4500
	靜負荷 Co(Kgf)	12100

48

Technical drawing of a gear pump (model 4R40-40S2-DFSH-5600-0.05). The front view shows a circular housing with 4- $\phi 11$ THRU holes (BCD 93) and a central shaft with an M6x1Px8 screw. The side view shows a shaft diameter of $\phi 11.4$ and a total length of 102. The gear meshing area has a diameter of $\phi 7.2 \pm 0.010$. The housing has a diameter of 84 and chamfers of 30 and 30 degrees.

4R40-40S2-DFSH-5600-0.05	動負荷 C(Kgf)	2808
	靜負荷 Co(Kgf)	7166

R50系列

49

Technical drawing of a gear pump (model R50-10T4-FSI-5600-0.05). The front view shows a circular housing with 8- $\phi 11$ THRU holes (BCD 93) and a central shaft with an M8x1Px10 screw. The side view shows a shaft diameter of $\phi 11.0$ and a total length of 89. The gear meshing area has a diameter of $\phi 7.5 \pm 0.010$. The housing has a diameter of 42.5 and chamfers of 45, 15, and 15 degrees.

R50-10T4-FSI-5600-0.05	動負荷 C(Kgf)	5100
	靜負荷 Co(Kgf)	15800

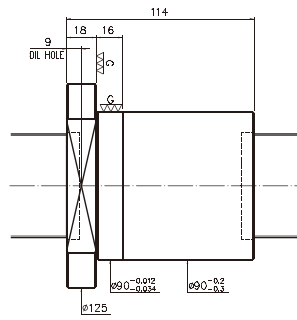
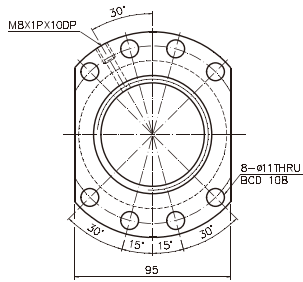
50

Technical drawing of a gear pump (model 4R50-50S2-DFSH-5600-0.05). The front view shows a circular housing with 4- $\phi 14$ THRU holes (BCD 112) and a central shaft with an M8x1Px10 screw. The side view shows a shaft diameter of $\phi 13.5$ and a total length of 125. The gear meshing area has a diameter of $\phi 9.0 \pm 0.010$. The housing has a diameter of 104 and chamfers of 30 and 30 degrees.

4R50-50S2-DFSH-5600-0.05	動負荷 C(Kgf)	4180
	靜負荷 Co(Kgf)	11205

R63系列

51



R63-10T6-FSI-5600-0.05

動負荷 C(Kgf)	6192
靜負荷 Co(Kgf)	21409